

Smart Electric Tail Gate Lift

INSTALLATION MANUAL

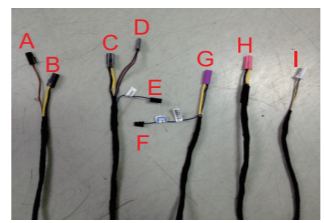
NOTE

- To ensure safety & normal usage of our products, please let the professional sales staff to install; to avoid damaging the machine or causing accidents, please do not dismantle the products.
- To start the engine before installation, check the car dashboard display function, whether the buttons operate normally, whether there is any scratches on car interior and surface. If any problems, reflect to the customer immediately.
- Check whether the tailgate can normally open and close or not, check if there is any problem with the lights.
- Turn off the engine, prepare tools.
- For installation personnel: please remove metal objects and any other hard objects to prevent car damage during the installation process.
- Remove automotive components and place them carefully to avoid scratching the dashboard; wiring debris need to be tidied up in time, do not leave them in the car; joints must be well insulated to prevent Short circuits.
- According to our wiring way, to avoid affect the car moving parts, such as steeringcolumn, the accelerator and brake pedals, etc., each harness should be fixed after wiring, to avoid getting loose.
- Connect each harness according to our wiring way(pay attention to the position of ground wire).
- Do not change the wires or accessories with the power on.

Remote control operation: fast press the trunk button 2 times.

All above is subject to change without prior notice. all rights reserved.
After installation,close the tail gate manually, so that the system can initialize.

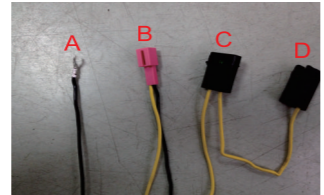
Wire Definition



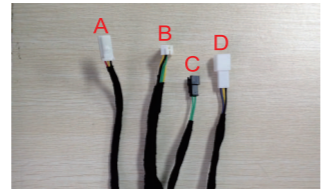
- A. Latch-driving box port -2
- B. Latch-driving box port -1
- C. Control box port -10
- D. Control box port-5
- E. Joint with the power cable -G
- F. Joint with the latch cable -G
- G. Control box port -6
- H. Joint with the power picker -A
- I. Joint with the CANBUS -B



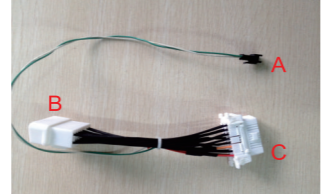
- A. Back button port
- B. Control box port -3
- C. Buzzer -A



- A. GND
- B. Joint with the power cable -A
- C. Fuse box
- D. Power clamp

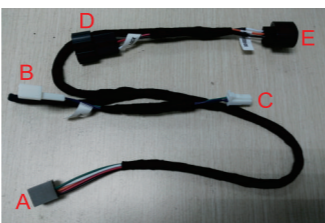


- A. Front button port
- B. Joint with CANBUS
- C. Joint with Com-munication -C
- D. Joint with the power cable -B

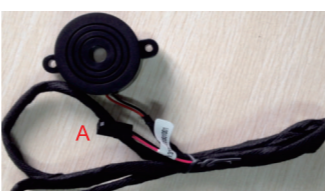


- A. Communication -C
- B. OBD(in)
- C. OBD(out)

Wire Definition



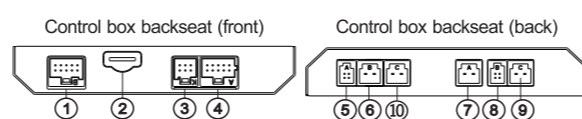
- A. Control box port
- B. Button(in)
- C. Button(out)
- D. Lock cable(in)
- E. Lock cable(out)



- A. Connect to the back button switch wire -C



- A. Connect to the control box port-7
- B. Connect to the control box port-8-9



Installation Steps



1. Ford Escape.



2. Pry the plaque and remove it.



3. Pry the plaque and remove it.



4. Pry the handle cover and remove it.



5. Dismantle the screw of the plaque.



6. Pry the plaque and remove it.



7. Dismantle the original gas spring.



8. Dismantle the left original bracket.

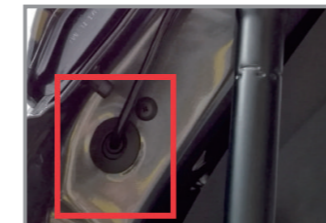
Installation Steps



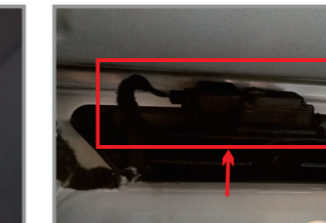
9. Install our special left bracket.



10. Install our poles.



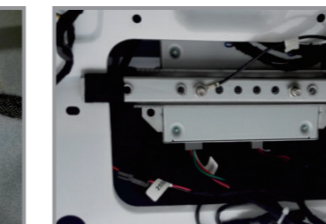
11. Wiring of the motor wire.



12. Unplug the original button wire, connect to our button transfer wire.



13. Unplug the original lock wire, connect to our lock control wire.



14. Position to install the control box.



15. Power cable along the roof.



16. Tie the power cable and iron wire with the tape for the convenience of threading.

Installation Steps



17. Power cable goes through the sealed plastic pipe.



18. Direction of the power cable is the same as the original wire.



19. Wiring the route of the power cable as shown in the picture.



20. Dismantle original lock bolt, install our special electric suction lock bolt. (with our matched screws) .



21. The latch driving-box on the right side of the trunk.



22. Go through the wire under the foot plate.

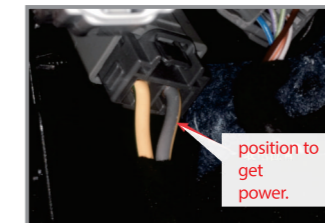


23. Installation position of front button for cars from China.



24. Use punch mould to drill in the circle position, install our matched back button.

Installation Steps



25. To get power in the copilot position, under the glove box.



26. Install the trunk plaque.