

# 15 year+Mercedes C class Electric Tailgate Installation

Precautions for installation of electric tailgate:

- 1、 For safety and to ensure the normal use of the product, please leave it to the professional staff who sells this product to install it. Do not disassemble the machine privately to avoid damage to the machine and accidents.
- 2、 Start the engine before loading the car, check whether the function display of the car instrument, the operation of the buttons in the car are normal, and whether there are scratches on the inner and outer surfaces of the car. If there is any problem, report to the customer in time. 3. Check whether the opening/closing of the tailgate is normal, and check whether the car lights are normal.
- 4、 Turn off the engine and prepare related tools.
- 5、 The installer should first remove the metal objects and other hard objects carried on the body to prevent damage to the car seat or interior decoration during disassembly and assembly.
- 6、 During the installation process, pay attention to the dismantled car components to be put away to avoid scratching the car's instrument: desk, and the debris left during the wiring should be disposed of in time, and do not leave in the car. The joints must be well insulated to prevent short circuits.
- 7、 According to our wiring method, avoid affecting the moving parts of the car during the wiring process, such as the steering wheel drive shaft, oil, and brake pedals to the

vehicle control parts. The wiring harness must be fixed after routing to prevent loosening.

- 8、 Please connect the wiring harness according to our wiring method (note the position of the ground wire).
  - 9、 Do not plug or unplug the connected leads and accessories when the power is on, so as not to damage the host or accessories when plugging or unplugging.
  - 10、 If the original car key has a tailgate opening button, please press and hold this button to turn on and off the tailgate. If not, press the unlock button three times to turn on and off the tailgate.
- ▲After installation, manually close the trunk to initialize the system**

Wiring diagram (this diagram is for reference only, please refer to the actual product)





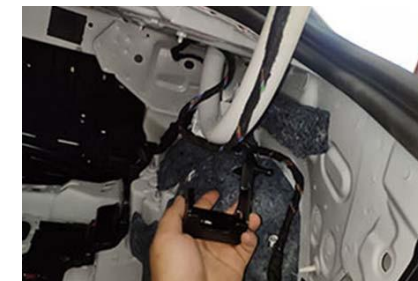
1. C class appearance



2. Remove trim panels in order .



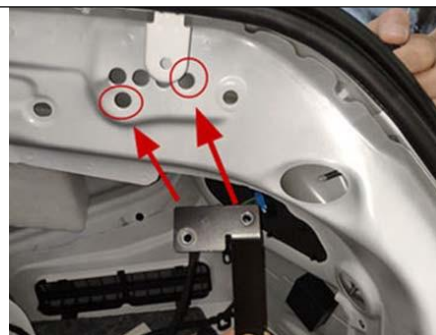
7. Remove the hanging spring plastic part (same for left and right)



8. Set our swing arm bracket to the original spring position (same left and right)



3. Remove the original car body spring (same for left and right)



4. Put our nut washer into the marked hole in the picture (same left and right)



9. Use our M6 screws to tighten (same left and right)



10. Use our M8 screws and nuts to lock in the original car suspension spring position (left and right are the same)



5. As shown in the picture



6. Install our body bracket ("L" on the left and "R" on the right)



11. Install our electric brace ("L" on the left and "R" on the right)



12. Remove the original car lock



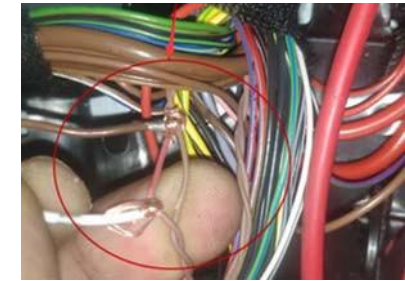
13. Disassemble the lock ring of our electric suction zipper



14. Thread the drawstring from the position marked in the figure



19. Find the wiring harness in the trunk



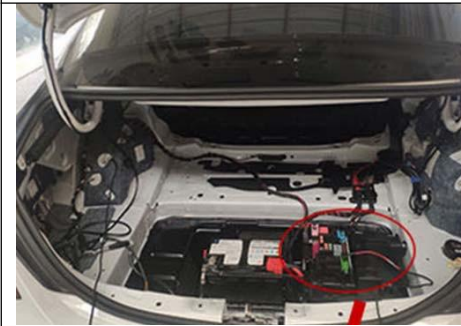
20. Connect our brown wire to the original brown wire  
The white line of our company is connected to the original car, the brown red line, the original car, the pure brown and the brown red line are mixed together



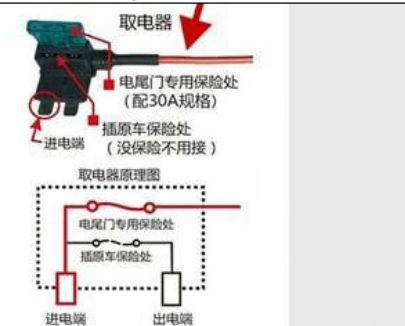
15 Assemble our lock ring and install it



16. Fix our suction motor



21. Find regular electricity in the fuse box



22. Take wire definition diagram

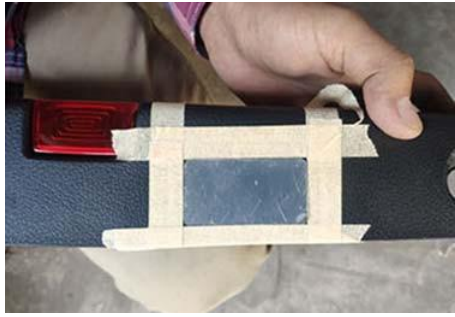


17. Unplug the original car lock plug and connect it to our wiring harness



18. Unplug the original car lock plug and connect it to our wiring harness



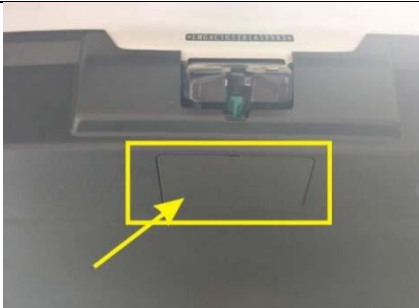


25. Follow the shape of our positioning sheet to install our tailgate buttons



26. Restore all trim panels, installation is complete, manually reset and shut down once to initialize the system

W12 retrofit tailgate button operation setting method: long press the retrofit tailgate button and hold it down  
The first sound is to set the height  
The second sound is to increase the anti-pinch  
The third sound is to increase the closing speed  
The fourth sound is to restore factory settings



When the tailgate cannot be opened normally, find the emergency safety lock of the original car in the trunk, open the emergency cover, and pull the emergency switch to open it.

Fault phenomenon	Solution
The electric tailgate lift does not work after installation	<ol style="list-style-type: none"> <li>1. check whether the power is powered</li> <li>2. Check if the positive and negative power wire is connected correctly.</li> <li>3. Check if the fuse is plugged in.</li> <li>4. Check if the signal cable connection is correct.</li> </ol>
Self-priming lock does not work	Check if the signal cable is connected correctly
The electric tailgate lift is opened or closed halfway and stop working suddenly.	Check if the connector plug is plugged in
Manual or remote unlocking, the tailgate does not rise	<ol style="list-style-type: none"> <li>1. Check if the signal cable connection is correct.</li> <li>2. Check the positive and negative, power supply</li> </ol>
The speaker keeps ringing for a long time	Check if the harness connector is connected correctly
The tailgate opens up quickly or The speaker is ringing for a long time	Check if the Hall plug on the pole is connected
The tailgate closes and the horn is ringing for a long time	<ol style="list-style-type: none"> <li>1. Self-priming locks need to be adjusted slightly upwards.</li> <li>2. Is the harness connected?</li> </ol>
Press the switch button, tailgate does not respond	Manually close the tailgate and open it again
The speaker does not ring	Check if the speaker plug is plugged in or touched well.
The tailgate opens and the self-priming lock does not loosen up.	Check if the ECU (controller) plug is tight well

**Remarks:** After installing the electric tailgate lift, you must manually close it once and then open it. Finally, the installation is complete.

**How to use the remote control:**

Press the key unlock button 3 times within 4s to open or close the tailgate;

Cab button: Press to open the tailgate and press it to close the tailgate.

**Disclaimer:** The problems and losses caused by improper installation and improper use are not covered by our company's warranty.

---